



Uudenmaan liitto
Nylands förbund



Interreg
Europe



European Union | European Regional Development Fund

How to make a successful Interreg Europe project application” - experiences from the first call approved projects

Christine Chang

Helsinki-Uusimaa Regional Council

Helsinki, 7.4.2016

Something about me

- Coordinator of the iEER-project
- Member of the EU service team of the Helsinki-Uusimaa Regional Council to support regional actors in EU project preparations, in particular Interregs.

Experince

- Proposal writer and coordinator of lead partner organization in two Central Baltic projects and one Baltic Sea Seedmoney project
- Involvement in three projects submitted to the Interreg Europe first call as lead partner proposal writer (iEER) and as partner (BRIDGES and PASSAGE)



Involment in the first call applications approved by the Interreg Europe

Project	Programme priority	Budget	Duration	Partnership
iEER	2.1 improving SEMs competitiveness policies	€ 2,3 M	2+2 years	LP: Helsinki-Uusimaa Regional Council
BRIDGES	1.1 improving innovation infrastructure policies	€2 M	3+2 years	LP: Kainnun etu
PASSAGE	3.1 improving low-carbon economy policies	€ 1,9 M	2+2 years	LP: Pas de Calais regional Council

Some lessons learned from preparing the first call applications

1. LP, who is a MA or an IB of a structural fund programme and posses all relevant competences, will make the life of all partners, including the LP itself, easier.
2. Though more than 50% of the addressed policies should be structural fund programmes is a knock-out criteria, if most of your partners have to request support letters from the MA/IB of the ESIF in order to pass this threshold. IE may not be a right fit for your project idea. It will be challenging to plan and achieve the impacts if partners have very little power to influence the addressed policy.
3. The policy instruments and the action plans should be based on the local development need – only involvement and contribution of all partners to the project application could possibly help to develop a project with added value.
4. Ask each partner to discuss and agree in advance with the decision making body of the addressed policy/policies on what kind of impact and improvement the project can bring (very important information needed in order to demonstrate the impact in AF section B2 and secure possible funding in phase 2)
5. AF to be consistent and logical. have extra 2-3 pair of eyes to read through the application – writers tend of get blind by their own writings.
6. Read through the programme manual carefully. If you have any questions, please contact the JS and the national contact point. They are very friendly and helpful!!!! 😊
7. The last but not the least, check your application/proposal against the IE selection criteria (programme manual 5.3) before submission!

iEER



Goal: improving 11 structural funds programmes to better support young entrepreneurship in the regions

Duration 2+2 years
Phase 1: April 2016 - March 2018
Phase 2: April 2018 - March 2020

Partner regions Helsinki-Uusimaa (lead partner)
Brandenburg,
Southern Denmark,
Nord-Pas de Calais,
Kerry County,
Northern Ireland,
Valencia,
Marche,
Westpomerania,
West Romania

Additional support Committee of the Regions



BRIDGES

Goal: renewing the industrial competitiveness in the bioeconomy sector by bridging competence infrastructure gaps and implementation of 6 RIS3 Strategy .

Duration

3+2 years

Phase 1: April 2016 - March 2019

Phase 2: April 2019 - March 2021

Partners

- Kainnun Etu Ltd (Lead partner)
- Regional Council of Kainnu
- Lubelskie Voivodeship
- Helsinki-Uusimaa Regional Council
- West Macedonia
- Soča Valley Development Centre, SI
- Pannon Business Network Association, HU
- European Business and Innovation Centre of Burgos, ES
- Centre for Research & Technology – Hellas/Institute for Research & Technology Thessaly, IT
- Alterra Wageningen UR, institute within the legal entity Stichting DLO, NL



Is Interreg Europe a right funding instrument for you?



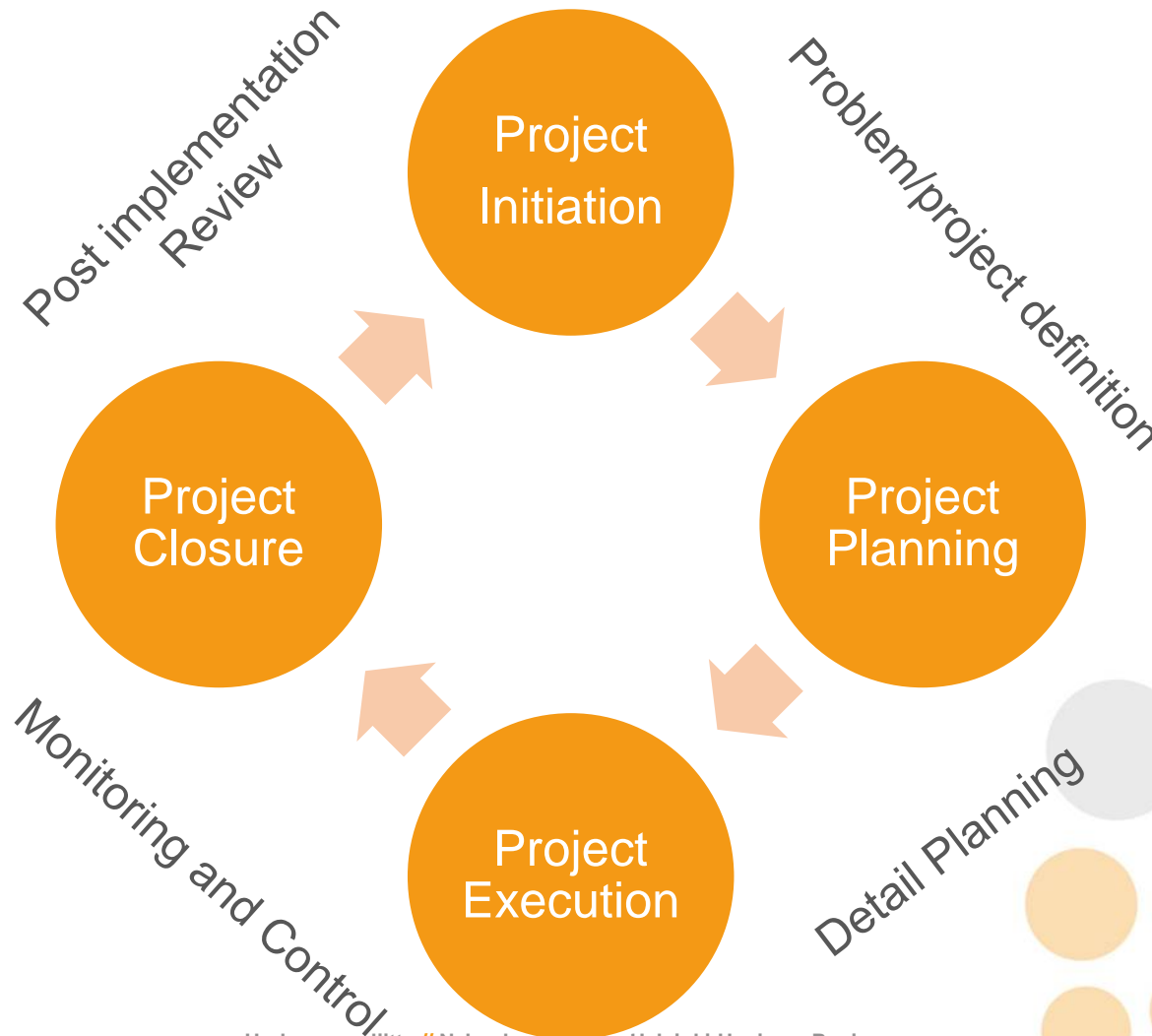
1. Are you and your partners either public bodies, bodies governed by public law or private non-profit bodies?
2. Is the issue addressed fit in one of the specific objectives of the programme?
3. Are the policy instruments that you and your partners want to improve clearly identified?
4. Are at least half of the policy instruments you want to address Structural Funds operational programmes?
5. Are the bodies in charge of the respective policy instruments involved in the project?
6. Does the partnership significantly go beyond cross-border and transnational cooperation areas?
7. Is interregional exchange of experience at the heart of the project?
8. Are the expected results of clear innovative character?

Source: www.interregeurope.eu/self-assessment/

How to make a successful Interreg Europe application?



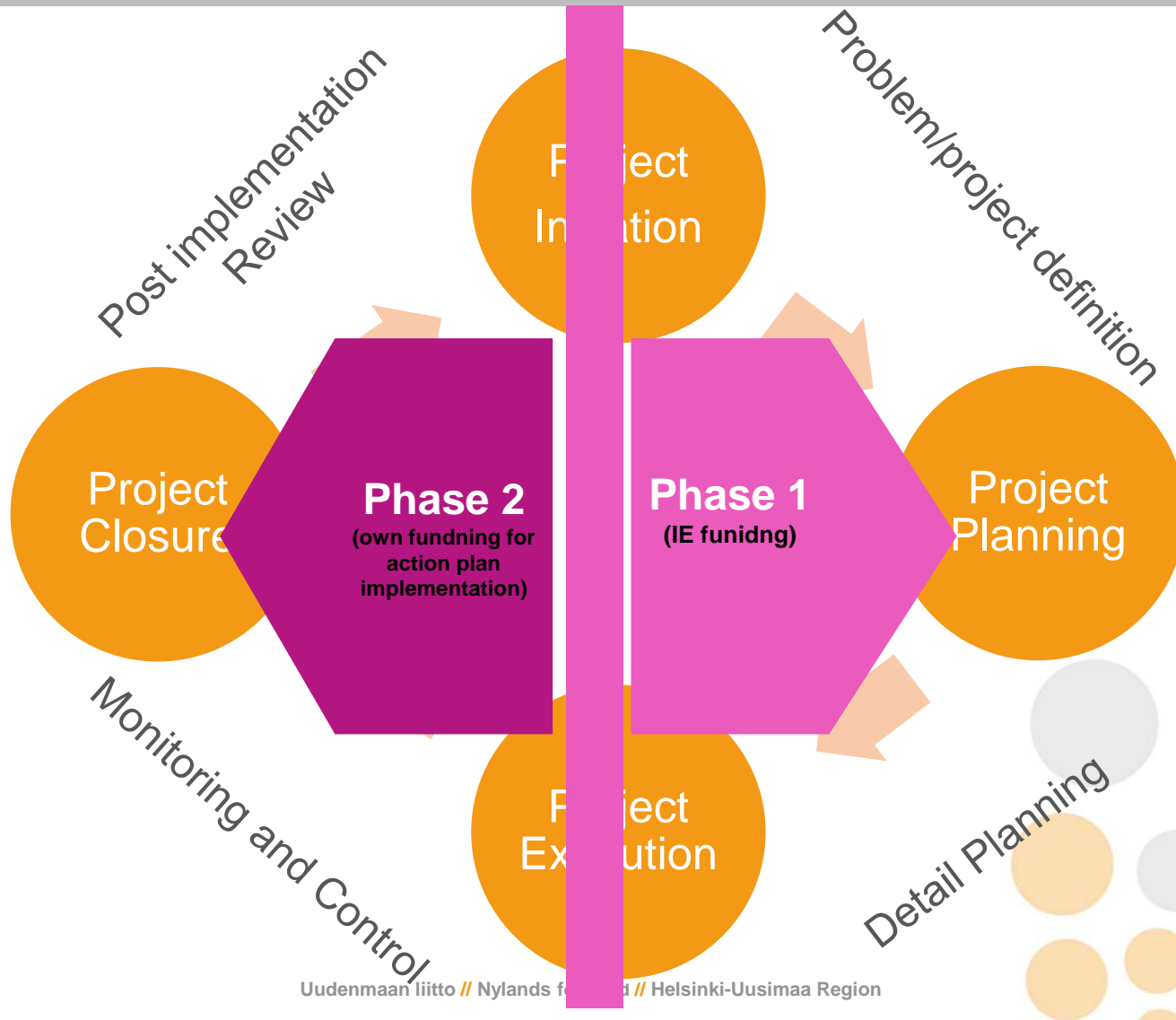
Overarching goals: impacts on policy instruments



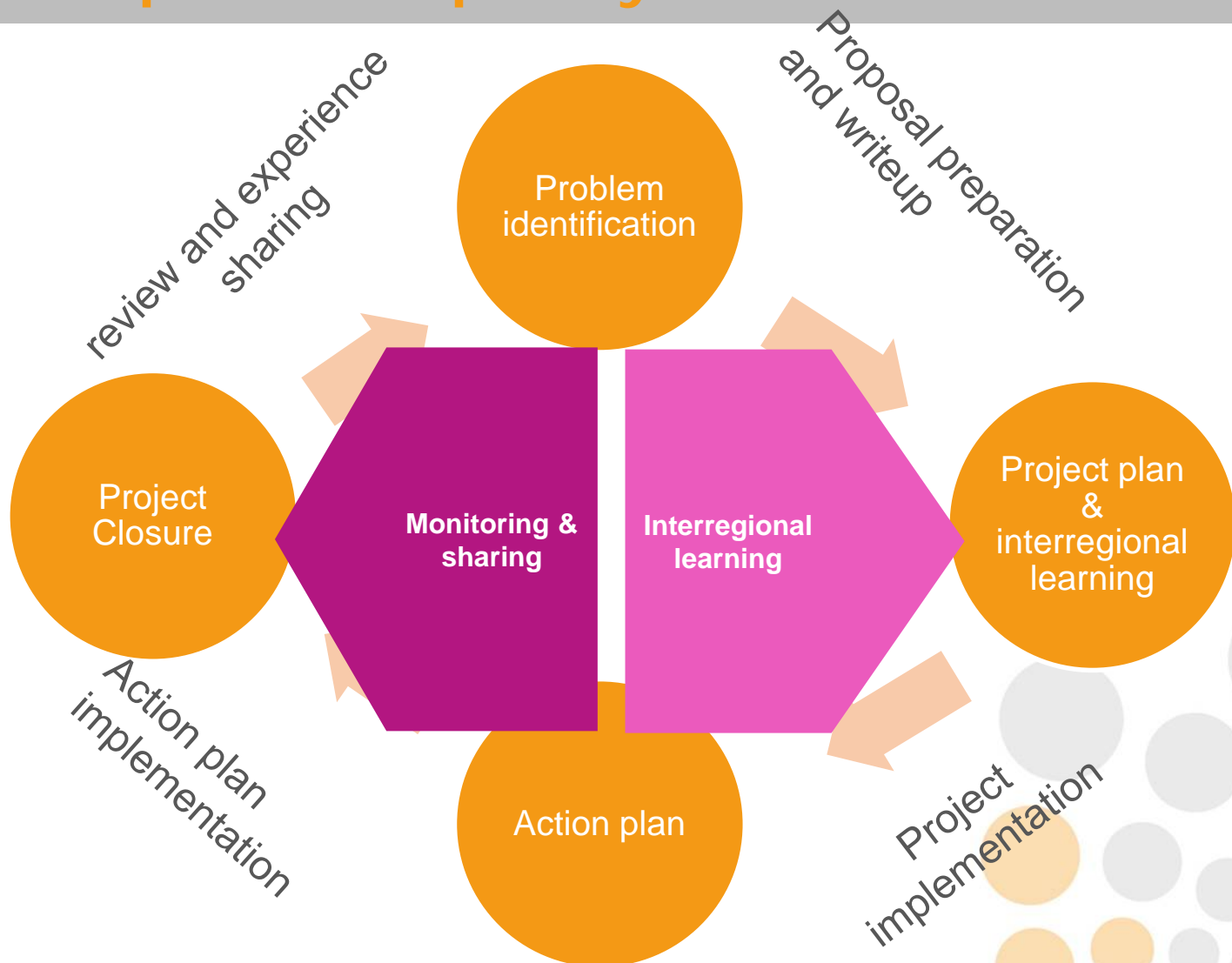
The IE appliacion writeup is an excercise of logframe approach

Project Description		Objectively verifiable indicators of achievement	Sources and means of verification	Assumptions
Goal	What is the overall broader impact to which the action will contribute?	What are the key indicators related to the overall goal?	What are the sources of information for these indicators?	What are the external factors necessary to sustain objectives in the long term?
Purpose	What is the immediate development outcome at the end of the project?	Which indicators clearly show that the objective of the action has been achieved?	What are the sources of information that exist or can be collected? What are the methods required to get this information?	Which factors and conditions are necessary to achieve that objective? (external conditions)
Outputs	What are the specifically deliverable results envisaged to achieve the specific objectives?	What are the indicators to measure whether and to what extent the action achieves the expected results?	What are the sources of information for these indicators?	What external conditions must be met to obtain the expected results on schedule?
Activities	What are the key activities to be carried out and in what sequence in order to produce the expected results?	Means:	What are the sources of information about action progress?	What pre-conditions are required before the action starts?
		What are the means required to implement these activities, e. g. personnel, equipment, supplies, etc.	Costs What are the action costs?	

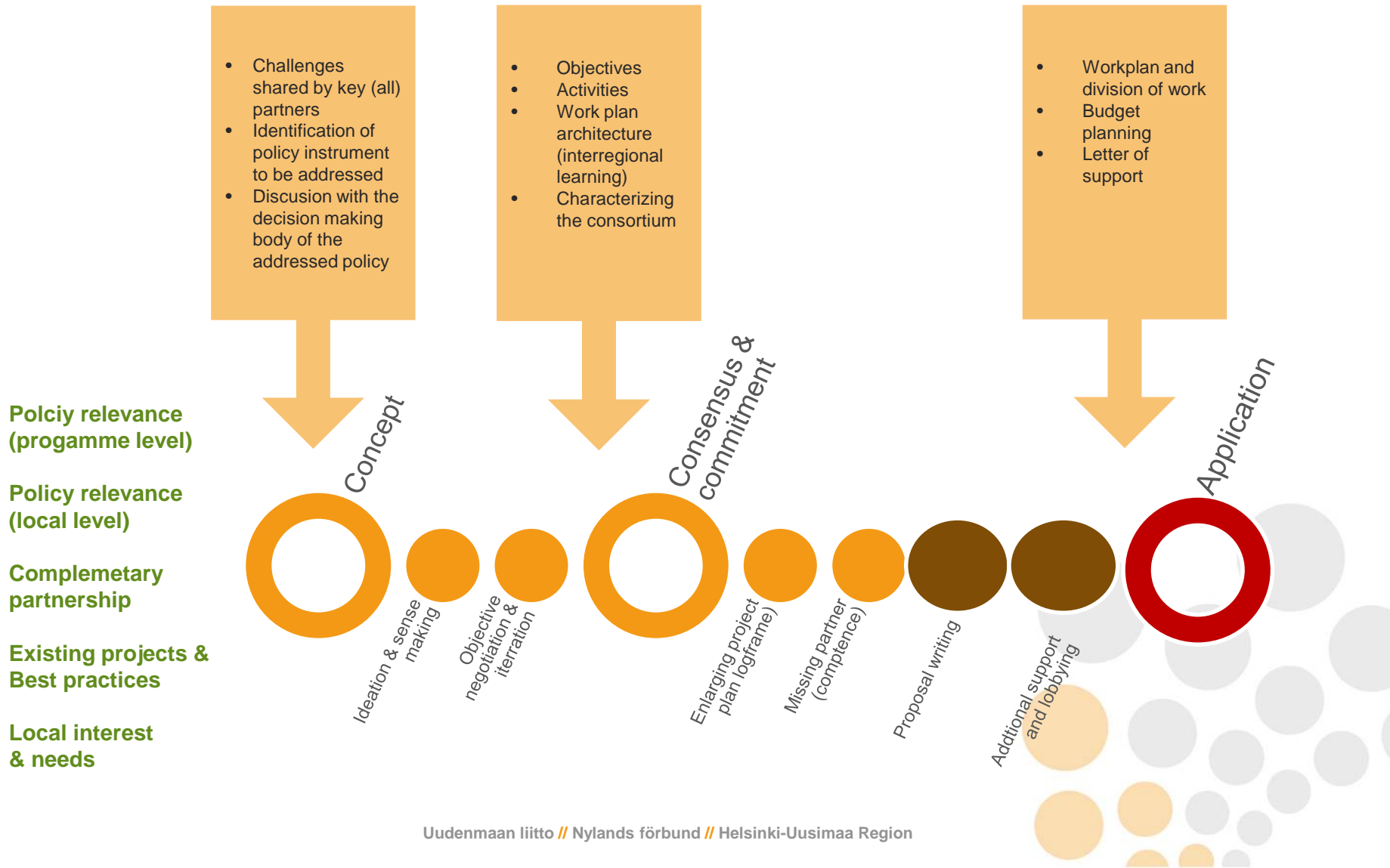
Overarching goals: impacts on policy instruments



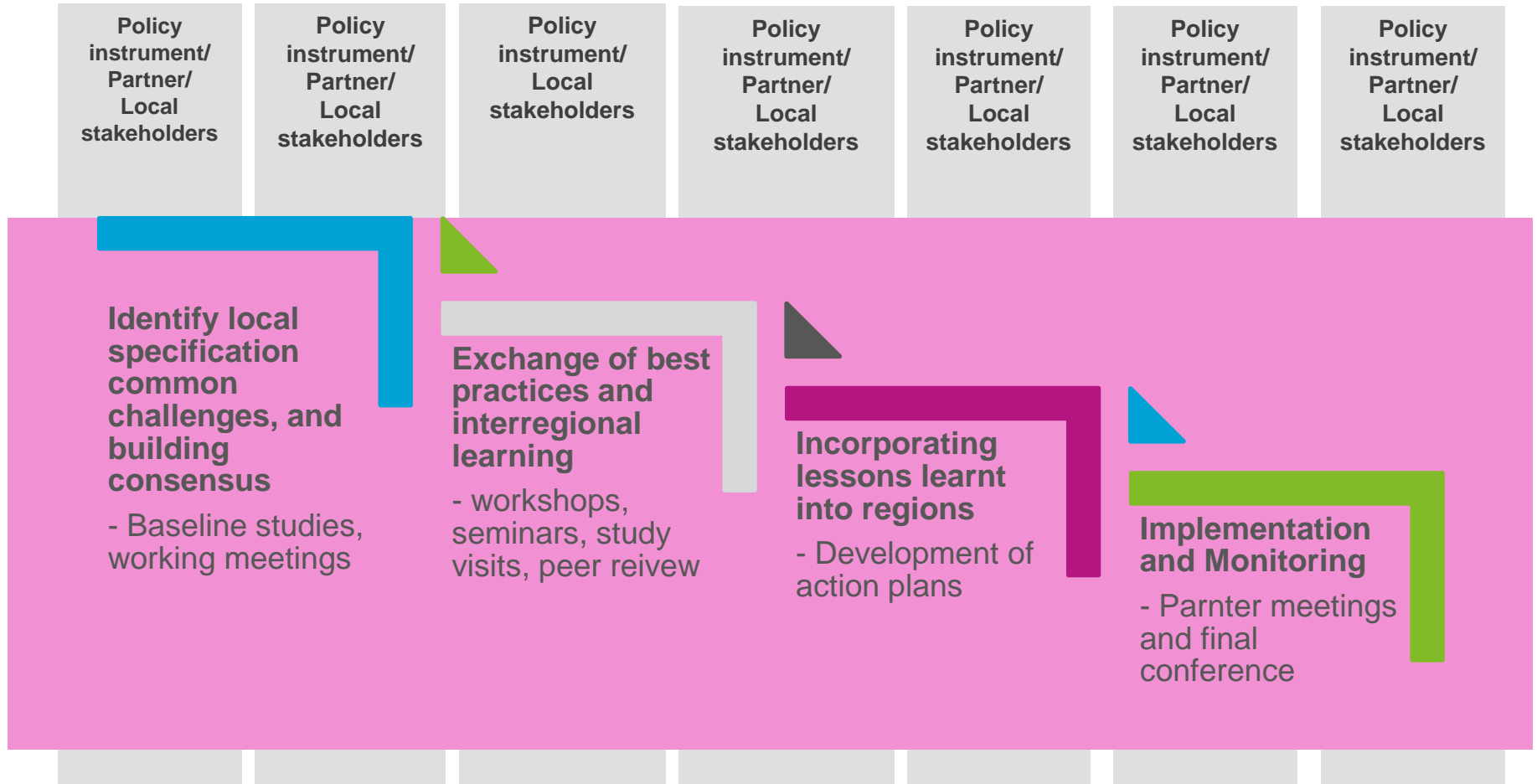
Overarching goals: impacts on policy instruments



Proposal preparation process



Project approach: Interregional learning is the center of activities



What makes a winning partnership?!



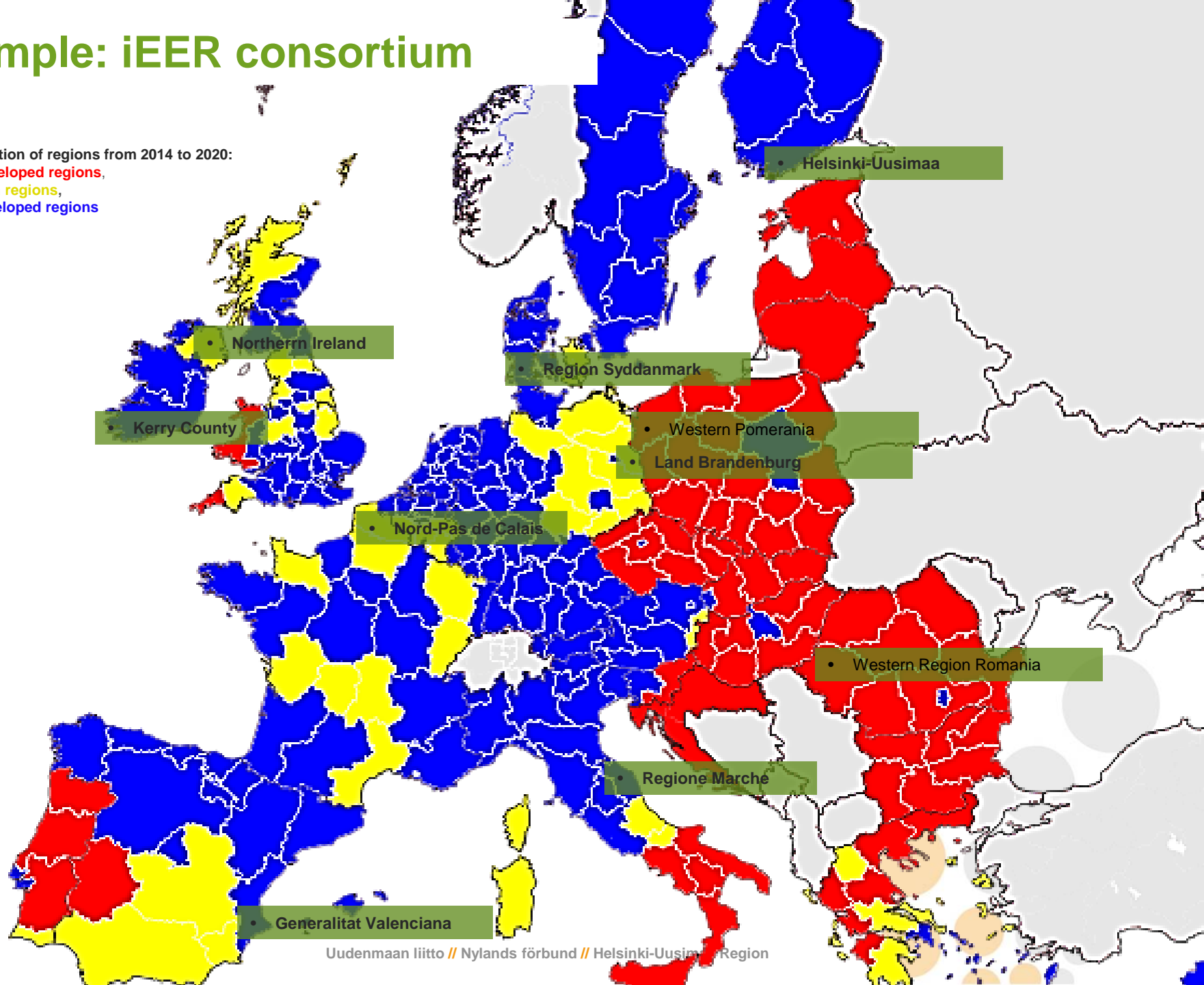
Example: iEER consortium

Classification of regions from 2014 to 2020:

Less developed regions,

Transition regions,

More developed regions



Thank you for your attention and
good luck!!!!

Christine Chang
Helsinki-Uusimaa Regional Council
+358 44 353 3014
christine.chang@uudenmaanliitto.fi

